

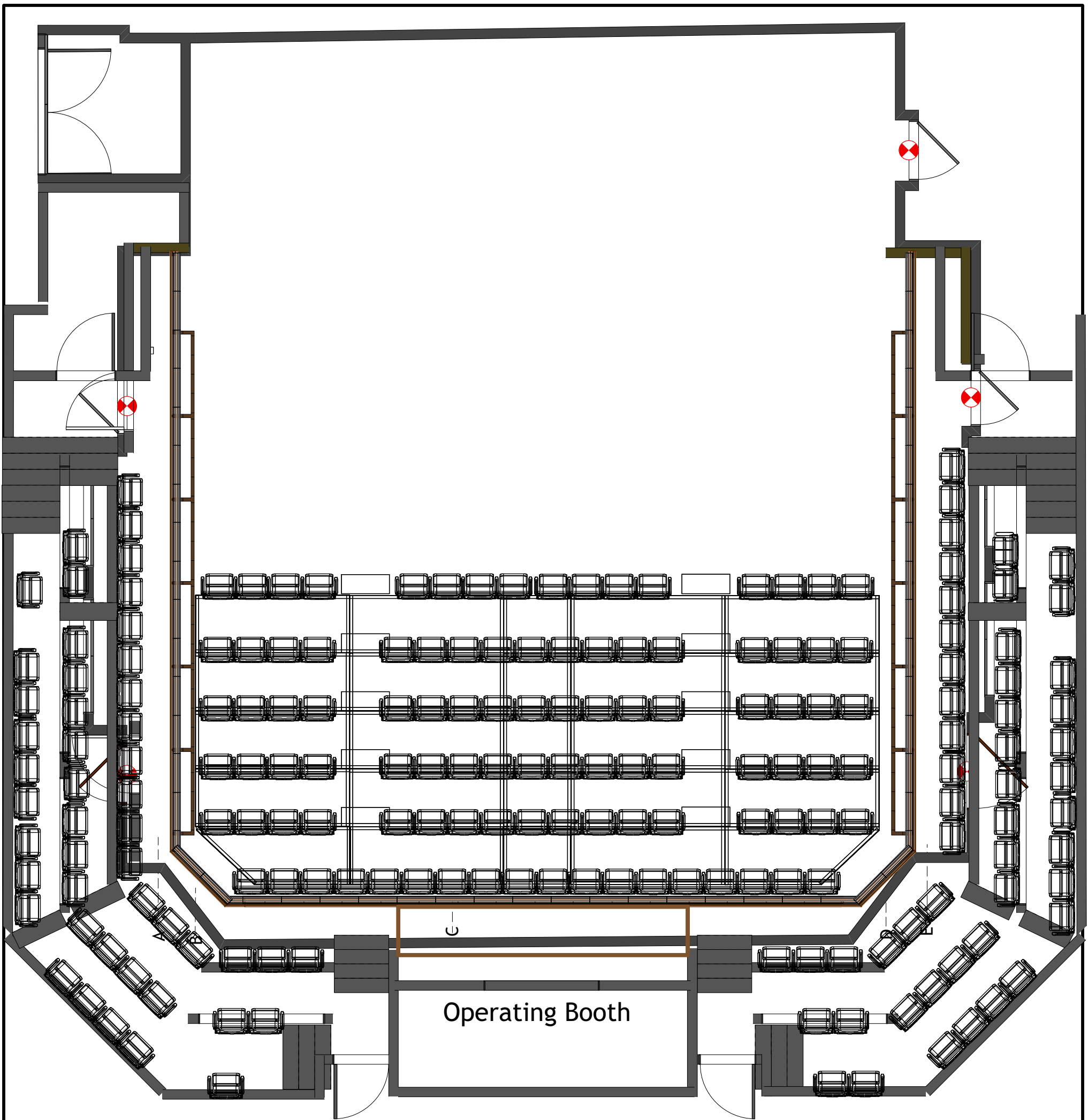
Half of double-door width

THE CULTECH

Production Title
Historic Theatre

Drawing Title
Exit Egress

Designer	Director
Drawn By Cody B.	Scale 3/16" = 1'0"
Venue Historic Theatre	Drawing No. 1
Date 08/01/2020	of
CAD File Name HistoricHouseHang2017.vwx	1



NOTES

Circuits for theatre lighting: 181
House LX dimmers 182-192

All numbered pipes are motorized
All lettered pipes are dead hung

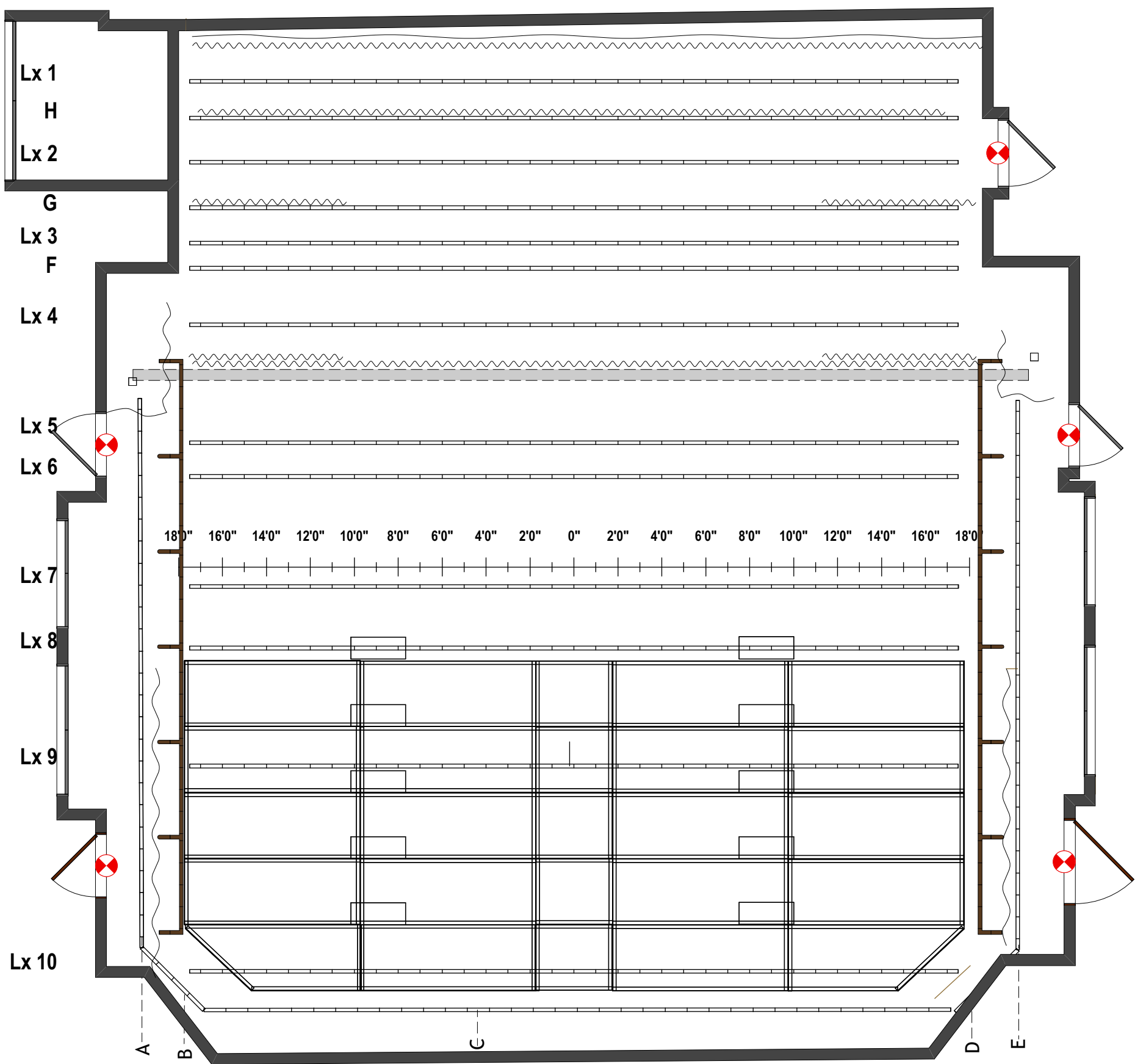
Trim for lineset 1 - 4: 18'4"
Trim for lineset 5 - 10: 19'6"
Trim for deadhung F -H: approx.20'

Trim for borders - 15'

Cyc is hung against upstage wall
with black drape immediately
downstage on track



Production Title		Historic Theatre	
Drawing Title		Floor Plan	
Designer	Director		
Drawn By	Scale 3/16" = 1'0"		
Venue Historic Theatre	Drawing No.		
Date 20/01/2020	1 of 1		
CAD File Name Historic Master Drawing			



Operating Booth

NOTES

Circuits for theatre lighting: 181
House LX dimmers 182-192

All numbered pipes are motorized
All lettered pipes are dead hung

Trim for lineset 1 - 4: 18'4"
Trim for lineset 5 - 10: 19'6"
Trim for deadhung F -H: approx.20'

Trim for borders - 15'

Cyc is hung against upstage wall
with black drape immediately
downstage on track

THE CULTECH

Production Title

Historic Theatre

Drawing Title

House Plot

Designer

Director

Drawn By

Scale

3/16" = 1'0"

Venue

Historic Theatre

Drawing No.

Date

20/01/2020

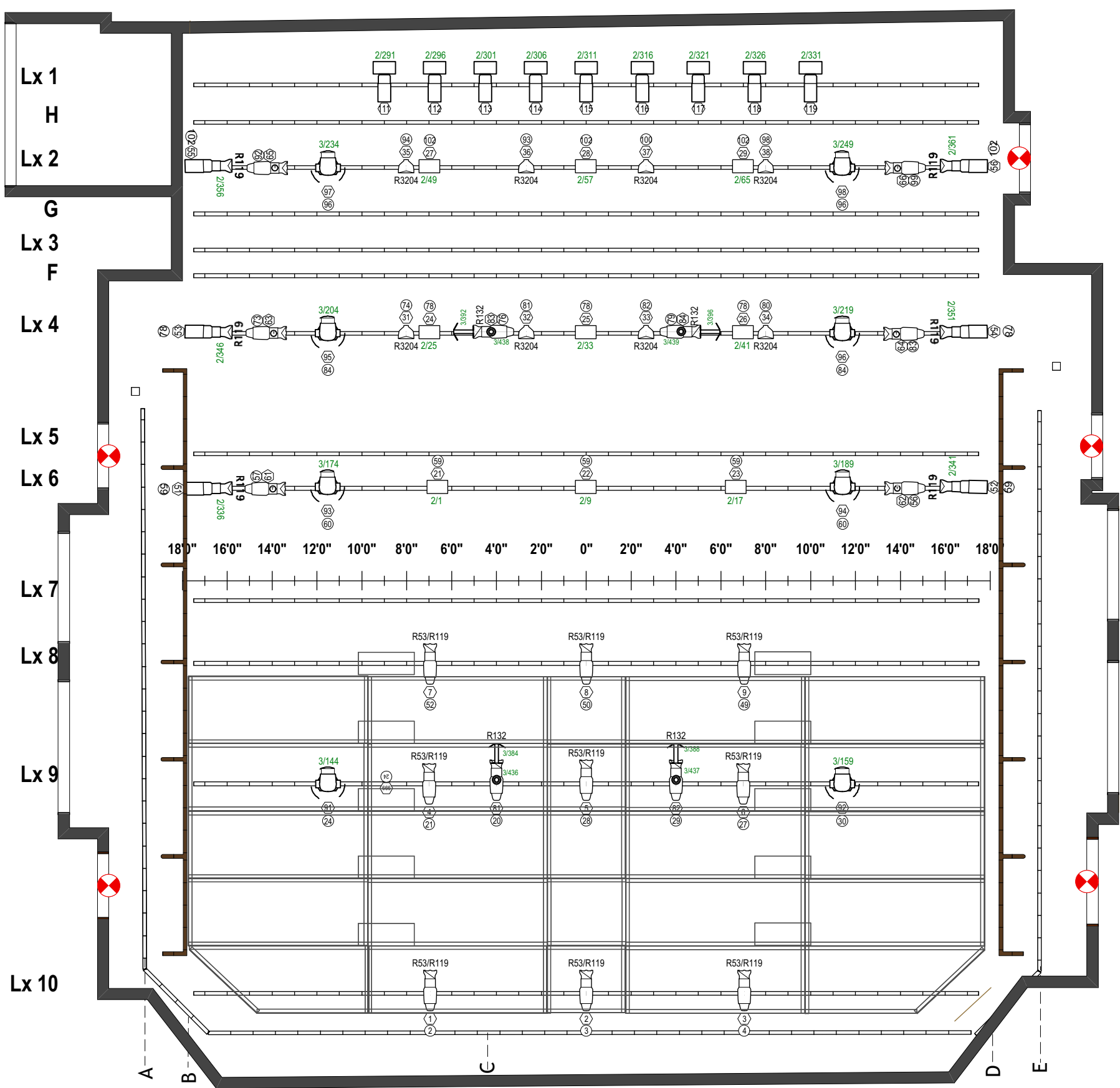
1

of

1

CAD File Name

Historic Master Drawing



Operating Booth

Light

- ETC ColorSource Cyclight 9
- ETC Vivid 11 9
- Elation Fuze Wash Z120 With Snoot 8
- ETC ColorSource Spot 50deg 6
- ETC Source 4 26° 13
- ETC Source-4 36° 0
- ETC Source4 50deg 6
- ETC Source4 PAR WFL 8

Accessory

- I-Cue 4
- Iris 4

Typical

NOTES

Circuits for theatre lighting: 181
House LX dimmers 182-192

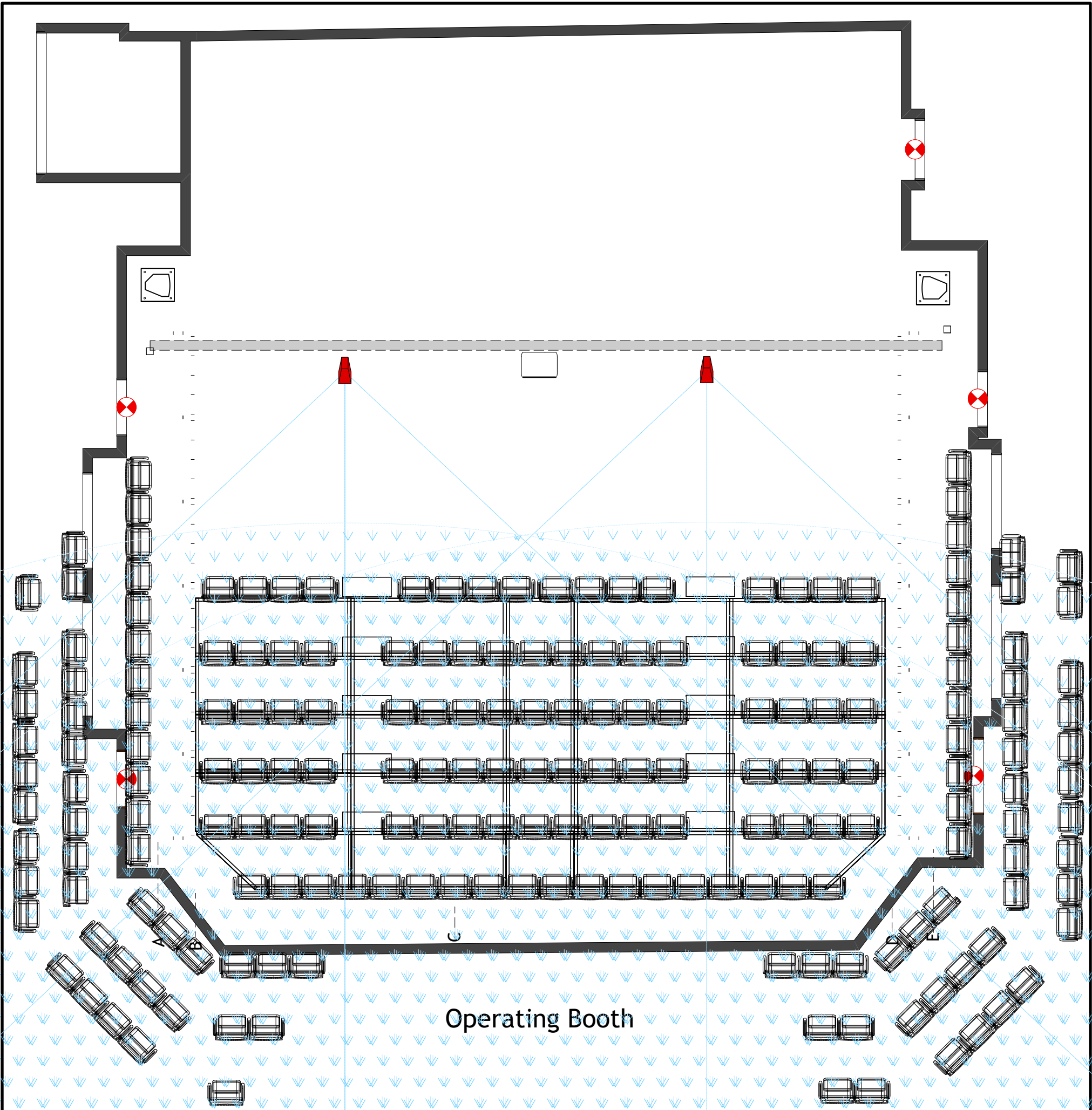
All numbered pipes are motorized
All lettered pipes are dead hung

Trim for lineset 1 - 4: 18'4"
Trim for lineset 5 - 10: 19'6"
Trim for deadhung F -H: approx.20'

Trim for borders - 15'

Cyc is hung against upstage wall
with black drape immediately
downstage on track

Production Title		Historic Theatre	
Drawing Title		House Plot	
Designer	Director		
Drawn By	Scale	3/16" = 1'0"	
Venue	Drawing No.	1	
Date	of		
CAD File Name	1		
Historic Master Drawing			



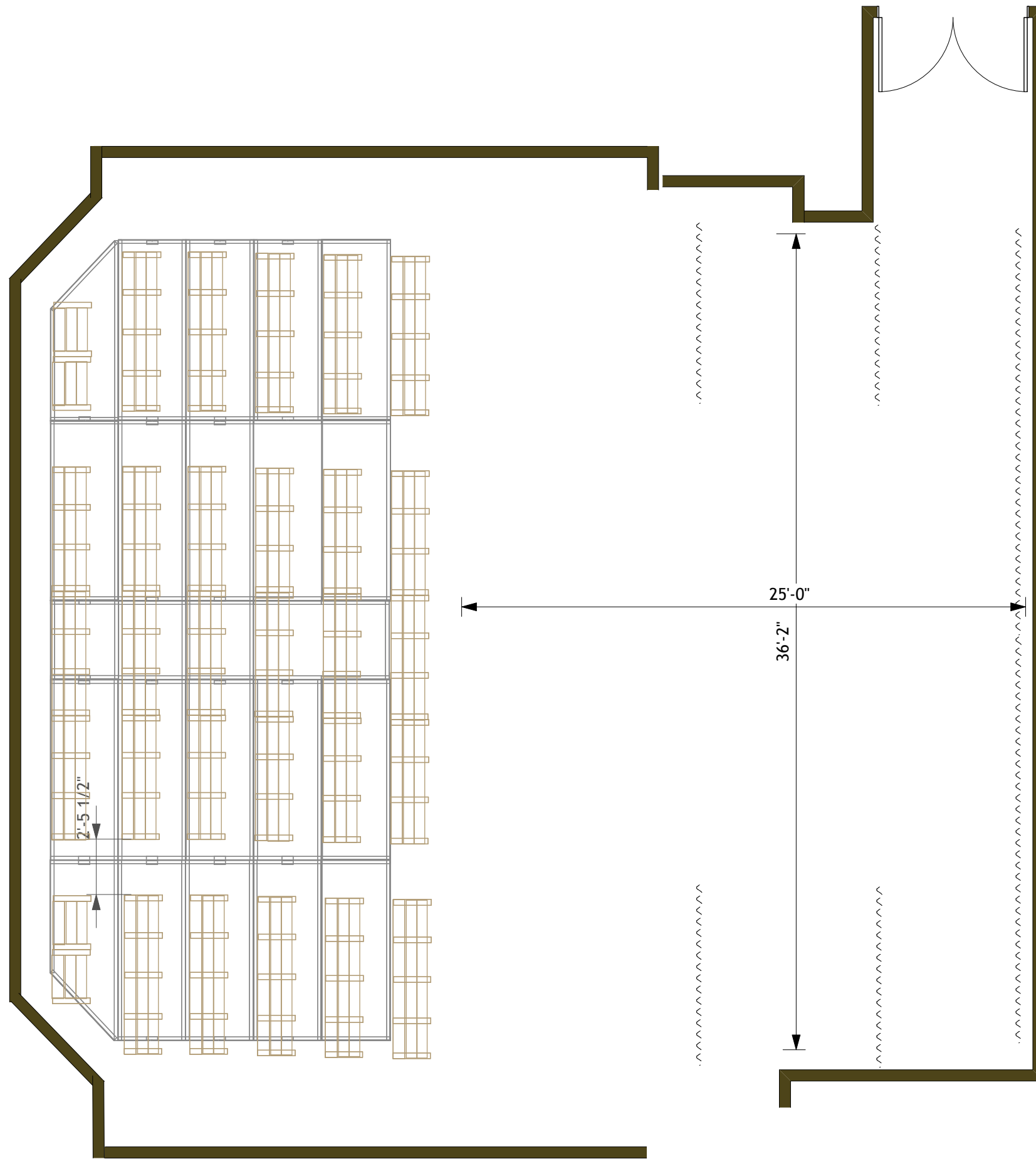
Operating Booth

NOTES

- ✓ Circuits for theatre lighting: 181
House LX dimmers 182-192
- ✓ All numbered pipes are motorized
All lettered pipes are dead hung
- ✓ Trim for lineset 1 - 4: 18'4"
- ✓ Trim for lineset 5 - 10: 19'6"
- ✓ Trim for deadhung F -H: approx.20'
- ✓ Trim for borders - 15'
- ✓ Cyc is hung against upstage wall
with black drape immediately
downstage on track



Production Title		Historic Theatre	
Drawing Title		House Plot	
Designer	Director	Scale	3/16" = 1'0"
Drawn By		Drawing No.	1
Venue	Historic Theatre		of
Date	29/12/2020		1
CAD File Name	Historic Master Drawing		



LEGEND & INVENTORY

SHOW TITLE

Written By:

Producer

Director

Designer

VANCOUVER EAST CULTURAL CENTRE
Historic Theatre

Drawn by May 9, 2012

Reviewed by

Scale: 3/16" = 1'
 Drawing Number _____
 of _____
 Total Sheets

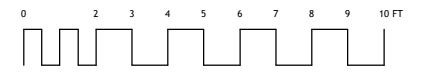
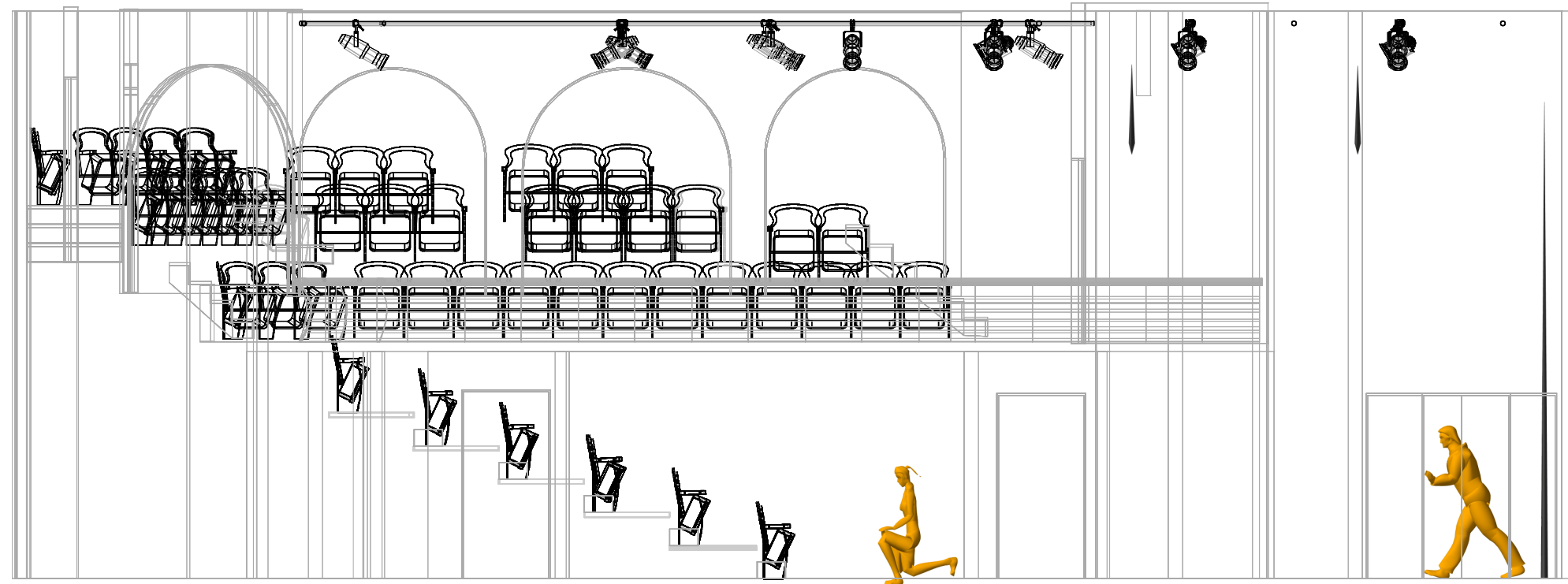
Historic Theatre -Load in Dimensions

Outer loading door opening: 69" wide by 82" high

Inner door opening to theatre: 78" wide by 81" high

*backstage vent has 76" clearance but is easy to go around in most cases.

NOTES



Producer

Director

Designer

VANCOUVER EAST CULTURAL CENTRE
Historic Theatre

Drawn by December 22, 2009

Reviewed by

Scale: 3/16" = 1'

